

# Welcome to Year 2



## Class Teachers:

2 Oak - Miss Ratcliffe

2 Maple - Mrs Rothwell (Mon, Tues, Wed am)  
Ms Sondhi (Wed pm, Thurs, Fri)

## Assistant Teachers:

Ms Zemira, Ms Lily 1:1

# Our Vision



***"Encouraging every child to reach their full potential – nurtured and supported in a Christian community that lives and learns by the values of Love, Compassion and Respect".***

***John 13:34 "Love one another as I have loved you."***

We provide a learning journey that encourages our children to be independent, well-rounded, kind and confident individuals – supported and nurtured by valued and committed staff.

We encourage all our children to flourish academically, spiritually and personally – and to achieve the highest academic standards possible for each child, within a stimulating, creative and secure learning environment.

Our Christian values of love, compassion and respect are at the heart of everything we do. Our school is welcoming and inclusive; we value equality and celebrate diversity, and our children know the nature of God from a Christian perspective, whilst developing their own beliefs of Christianity, other faiths or no faith.

Our pupils leave, at the end of Year 6, fully equipped with the skills to embrace the secondary school of their choice and with our core values to guide them on their life journey with the knowledge that God loves us all.



# Our School Day

Start, playtime, lunchtime, fit 15 etc.



Start 8:40	8:40- 9:00	Session 1 9:00-9:20	Session 2 9:20-10:15	10:15- 10:30	Break 10:30- 10:45	Session 3 10.45- 11:00	Session 4 11.00-11:55	Lunch 12:00- 13:00	13.00- 13.15	Session 5 and 6 1:15 - 3:00	Whole class reading / getting ready for home 15:00- 15:20	
Monday	Register and early work/ interventions	Guided Reading	RE	Singing assembly	BREAK	Phonics / Spelling	English	LUNCH	EMI	PPA (CR) PE / PSHE (Oak) <del>Maths</del> / PE (Maple)	Story	
Tuesday		Vicar's Assembly	<del>Maths</del>	Handwriting		Phonics / Spelling	English		EMI	Humanities	Story	
Wednesday		Whole School Assembly	PPA (SS)	Guided Reading		Phonics / spelling	PPA (JR)		English	EMI	<del>Maths</del> / Computing (Oak) Computing / PSHE (Maple)	Story
Thursday			Guided Reading				<del>Maths</del>					
Friday		Guided Reading	<del>Maths</del> / Music	KS Assembly		Phonics / Spelling	English		PE  Art / DT	Story		



# Daily Collective Worship



**Monday** Key stage - Hymn Practice with Mrs Noyes  
**KS1: 10.15am**

**Tuesday** Whole School – Vicars **(9.00am)**  
Reverend Melanie Harrington (St Luke's & 'The Barn')  
Father Giles Fraser (St Anne's)

**Wednesday** Whole school - Headteacher **(9.00am)**

**Thursday** Class Worship – Teacher/Faith and Prayer Ambassadors

**Friday** Key Stage Celebration  
**KS1: 10.15am**



# Ready for learning...



## General school rules:

- Hair must be tied back (below the collar) – girls and boys
- No nail polish or jewellery (unless Religious)
- No smart watches or Fitbits
- Please name everything, including water bottles
- School rucksacks or book bag - no danglies please
- Healthy eating - snacks in containers or reusable plastic bags
- No toys / personal items without permission

## Uniform:

- See website for uniform – black shoes
- EYFS & KS1 to wear **PE kit** to school **on their PE days (Monday and Friday)**
- Wear black school shoes / suitable footwear for PE
- Trainers can be left in lockers ready for clubs etc.

# Ready for learning...



## Resources:

Please bring in a **small bag** i.e. school book bag/ small rucksack (fit in a small locker):

- School reading book and Reading Record
- Reading for pleasure book
- Lunch box, if having a packed lunch (named) and snack
- Water bottle (named)
- Pencil cases: Ready-made pencil cases are available to purchase from the office £7. These will be kept in school.

# Food in school



## Due to the number of children with severe allergies and anaphylaxis

Children should NOT share food in school from school dinners or packed lunches.

We are a **nut free** school. This includes all tree nut and sesame seeds

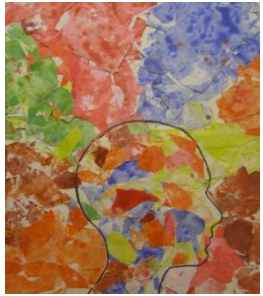
*N.B. Sesame oil is used in most commercial hummus and pine nuts in pesto sauces so should be avoided in packed lunches.*



*For more details and information on school lunches, please see our school website*

Children in EYFS and key stage 1 – have fruit provided

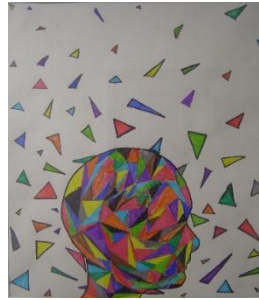
# Good learners are:



Enthusiastic



Motivated



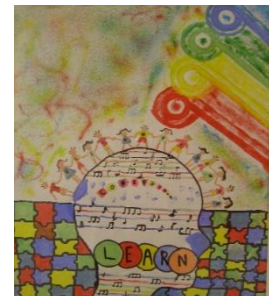
Resilient



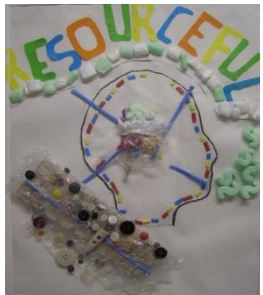
Imaginative



Inclusive



Confident



Resourceful



Determined



Flexible



Responsive



Independent



Focused

Our curriculum is underpinned by our 12 Learning Certainties, helping children to understand what makes a 'good learner'. The focus is on supporting children to develop learning skills and behaviours that can be applied to any situation, embedding learning skills for life. Each Learning Certainty is exemplified through Bible references and stories contributing to the spiritual and personal growth of our children.

# Feedback



## Year 1 and 2

C Capital letter

● Full stop

Sp I need to check my spelling mistake  
This is the correct spelling - look at the  
sound buttons

✓ This work is good

✓ ✓ This work is really good

? I need to think about this

😊 I need to smile as this is a very good work

# Assessment



Assessments are made against the learning objectives from the National Curriculum using KPIs (key performance indicators) appropriate to year group expectations.

Teachers assess the learning taught up to the point of assessment, this is known as a 'point in time' assessment or PITA.

Attainment will be described as:

Pre Key Stage	PKS	Working below their current key stage
Working below	BLW	Working below their current year group curriculum.
Working towards	WTS	Working within current year group curriculum and not secure in what has been taught.
Expected	EXS	Secure in learning taught so far in the current year group curriculum.
Greater Depth	GDS	Mastered learning taught so far and delves deeper into taught concepts in more detail.

Assessments are ongoing throughout the year: PITA three times a year.

Information on progress and attainment will be shared in parent consultations and in the final year report.



# Google Classroom



Google Classroom will be used for **homework**.

There will be general learning suggestions plus links to My Maths and any other homework related tasks.

**Photos** from the class may be shared from time to time.

Please retain your child's login details, as they will need these to access their Google Classroom.

**Homework will be set and uploaded onto Google classroom and will start from week beginning 15/09/25.**



# Homework



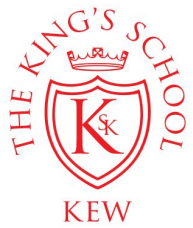
Year group	Homework	Expectations
<b>Year 2</b>	<ul style="list-style-type: none"><li>● Reading</li><li>● Spelling</li><li>● Maths: My Maths</li></ul>	Reading: recorded in reading record; 5-10 mins daily

## Homework Policy

- Homework has been designed to encourage a gradual progression of skills and expectation, so that by the time pupils reach Year 6 they will have a clear routine in preparation for Secondary School.
- Most of the homework is provided for the completion over the course of a week, so it can fit around family lifestyles and commitments.
- **Reading and spellings are better when completed in shorter, regular daily sessions.**



# Online Safety



We take e-safety very seriously at King's.

Not all children will recognise the term “e-safety” but they will be able to talk about safety online.

Online safety is routinely taught in computing lessons (and lessons where technology is used).

We use professional resources to inform children, staff and parents.

We are professionals and e-safety is part of our safeguarding responsibilities

Our systems are strictly monitored and controlled.

We are constantly striving to keep abreast of new developments in technology that could affect our children.

Please refer to our [Online safety](#) page on the website.



# Online Safety



## General Guidelines / Suggestions

- Talk to your children about their online activity
- Share what you do as a family online
- Encourage an open environment about online behaviour
- Restrict screen time on devices (tablet, laptop, mobile phone) before bedtime
- Don't allow devices to be kept in bedroom overnight
- Have a set of rules around use of devices
- Find things to do together online (games, homework research, holiday planning, etc.)

If children encounter inappropriate content while using devices, please share this with your class teacher to ensure that we can support discussions and reassure the children.



# Reading - Y2



## Reading in school

- **New Phonics Scheme - Little Wandle**

*Note to parents - more on this during curriculum evenings*

- Books are *changed on a Tuesday and Thursday.*
- 3 x reads - 1 decoding, 2 understanding, 3 expression and fluency.
- Children will be given freedom to change their own books on these days however can only change if their reading record is signed 3 times.
- **Class reader** – teacher reading a class novel daily

## Reading at home

Friday - Monday: Jolly phonics/ Year 2 reading books

Reading for pleasure - little and often



# Maths Mastery



**Language:** vocabulary/sentences

*'In our classes mathematical language is very important. Our students must know how to do, say and express maths.'* Teacher in Shanghai

**Over learning through**

- an emphasis on explanation and review
- Contexts
- Concrete resources
- Range of manipulatives
- Meaningful practice

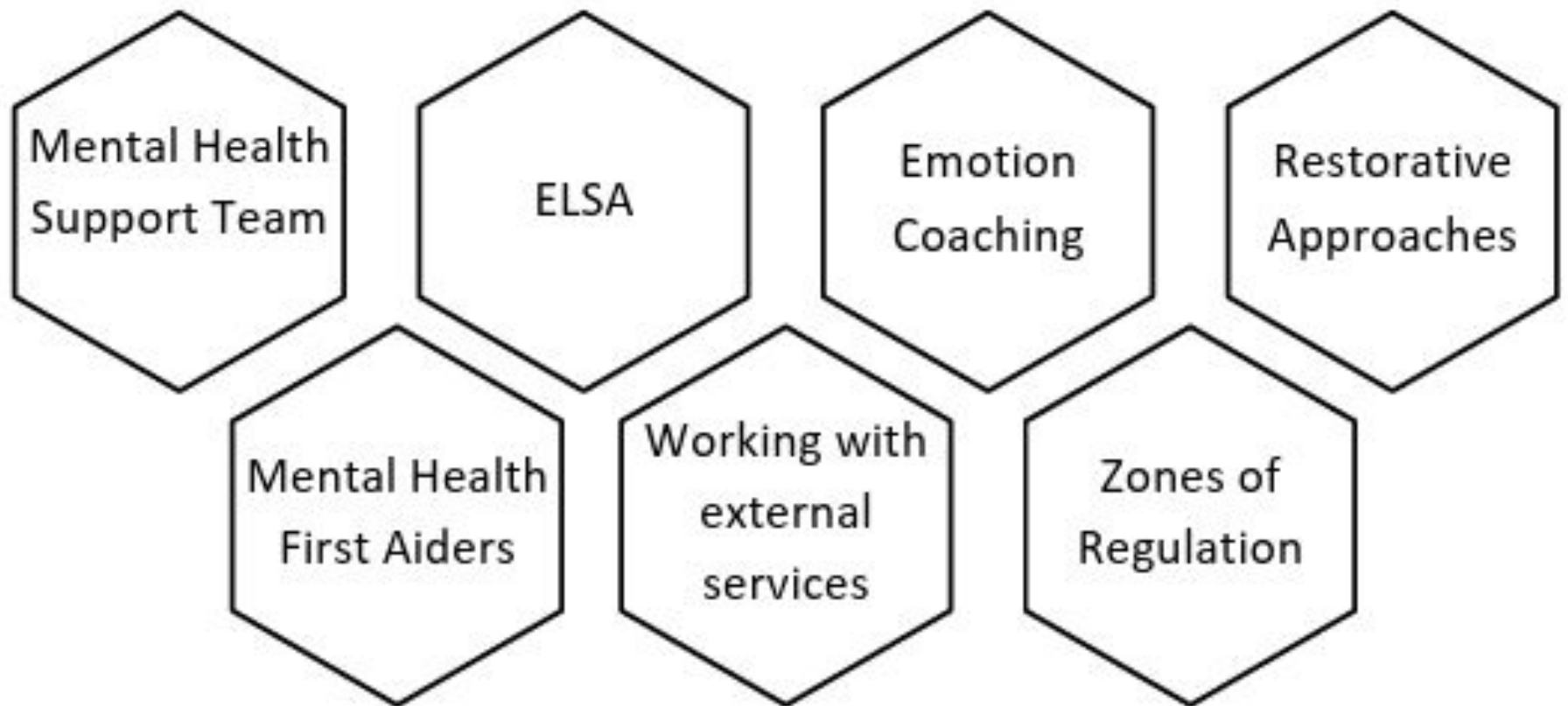
**Mastery:** understanding, visualising and explaining structures and relationships

**Depth through**

- Making connections, describing structures, relationships and patterns
- Solving problems
- Reasoning
- Generalising
- Proof
  - The children focus on and learn  $2 \times 5$  and  $10 \times 3$  in Year 2.



## How behaviour is supported at King's



# The **ZONES** of Regulation™



- Throughout the school children are **encouraged to identify their feelings** using the Zones of Regulation.
- In class, we work together to find ways to overcome these feelings and **get ourselves into the Green zone** when our best learning can take place. We call this our Tool Kit.
- Encourage your child to find ways to **regulate their feelings** and behaviour at home by helping them to find independent activities and strategies.
- *You can find more ideas and strategies for this on our Google Classroom.*

# The ZONES of Regulation™



			
<p><b>BLUE ZONE</b></p> <p>Sad Sick Tired Bored Moving Slowly</p>	<p><b>GREEN ZONE</b></p> <p>Happy Calm Feeling Okay Focused Ready to Learn</p>	<p><b>YELLOW ZONE</b></p> <p>Frustrated Worried Silly/Wiggly Excited Loss of Some Control</p>	<p><b>RED ZONE</b></p> <p>Mad/Angry Terrified Yelling/Hitting Elated Out of Control</p>

# The ZONES of Regulation™

Some ideas for your tool kit

The BLUE zone	The GREEN zone	The YELLOW zone	The RED zone
			
How might you feel?	How might you feel?	How might you feel?	How might you feel?
sad tired bored moving slowly	happy okay focussed ready to learn	nervous confused silly not ready to learn	angry frustrated scared out of control
What might help you?	What might help you?	What might help you?	What might help you?
Talk to someone Stretch Take a brain break Stand Take a walk Close my eyes	The goal of this exercise is to get to the GREEN zone. What can you do to be happy, calm and ready to learn?	Talk to someone Count to 20 Take deep breaths Squeeze something Draw a picture Take a brain break	Stop what I'm doing Make sensible choices Take deep breaths Ask for a break Find a safe space Ask for help

# Behaviour



## Behavioural Expectations

### The Golden Rules

Be gentle

Be kind and helpful to others

Be respectful to property and  
equipment

Be a good listener

Be honest

**Be the best version of you.**

### Class Contract

Classes collaboratively draw up a list of class rules that are signed by every member of the class as a contract between pupils and teacher.

### Behaviour Ladder

I am demonstrating the school values

I am following the rules

I am proud of my behaviour

Reminder of expected behaviour

I have a choice to change my behaviour

Reminder: I need to change my behaviour

What can I do differently?

What do I need help with?

I will have a restorative conversation with an adult

My behaviour does not meet expectations

I may need to see another adult



# Behaviour



## Behaviour Management

I am following the rules



Verbal positive praise

Dojo Points

House Team Incentives

Stickers

King's Shield Badge and Certificate

Good Work Bag

Positive Postcard

I need to change my behaviour



Follow Behaviour Ladder

Two reminders (including a restorative conversation)



Consequences

Restorative conversation with another adult:

- The other class teacher
- Phase Lead
- Assistant Headteacher/ Deputy Headteacher
- Headteacher

Behaviour Reflection Sheet

Loss of Social Time

Internal Exclusion ('Internal Reflection Time')

Individual Behaviour Plan

For more detailed information, please see our Behaviour Policy on the [school website](#)



# Enrichment Framework



*Bring up the Enrichment Framework and talk through your year group. Say it's on the website.*

*Give any dates for visits that have already been booked.*

[Enrichment Framework 2025-2026](#)



# Class Reps & email addresses



## Volunteering

We value and appreciate any time that parents/carers can offer to the school.

There are a few ways you can volunteer:

- Reading – we have many children across the school that would benefit from daily reading to an adult. (30 minutes after drop off or before pick up)
- Lunchtimes – supervising children collecting and eating their lunches (12-1pm)

**If you are able to volunteer regularly, we would be grateful for any time that you could spare. Please contact Ms Demir at [info@kings.richmond.sch.uk](mailto:info@kings.richmond.sch.uk)**

# School website



<https://www.kings.richmond.sch.uk/>

Our website is regularly updated, please reference it for:

- Diary dates and school calendar
- Fortnightly newsletters/ Keeping Up With King's
- Curriculum information
- Year group pages: Learning/ Year Group Pages. EYFS
- Key documents
  - Policies
  - Forms
  - Lunches, clubs, wrap around care etc.

# Any questions?



**We have an open-door policy.**

If you have any questions about your child, please see your class teacher at pick up when all teachers dismiss at their respective gates.

Alternatively, you can make an appointment by calling the school office 020 8940 3580 or email [info@kings.richmond.sch.uk](mailto:info@kings.richmond.sch.uk)

# Key dates



- **Curriculum workshops:** Wednesday 24th September 6pm
- **Coffee Mornings** 9am
  - Year 1 and 2: Tuesday 23rd September
  - Year 3 and 4: Tuesday 30th September
  - Year 5 and 6: Monday 29th September
  - SEN: Thursday 25th September
- **Individual and sibling photos:** 6th and 8th October
- **Half term:** 27th-31st October
- **Autumn 2 starts:** Monday 3rd November
- **Parent Consultations:** week beginning 24<sup>th</sup> November
- **Last day of Autumn term:** 19th December