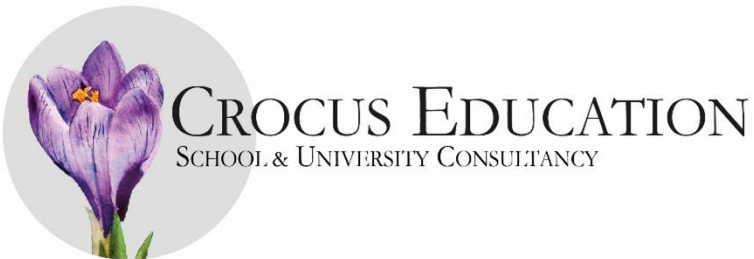


Secondary Pathways Evening



- 1) How to go identify the right school for your child?
- 2) Your child's options: comprehensive, grammar or independent?
- 3) Affordability, bursaries and scholarships
- 4) How to prepare for the Year 6 exams
- 5) How The King's School supports your family

Camilla is very happy to be contacted for advice and guidance



Camilla Smiley
camilla@crocuseducation.com
07823 322 447

Living and learning by the values of Love, Compassion and Respect.

John 13:34 "Love one another as I have loved you."

How to identify the right school(s)?



What kind of school will suit your child?

- Single sex/co-ed?
- Small/large?
- Academic/more rounded?
- Ethos?
- Extra-curricular provision?

What do you need to think about next?

- Geography
 - journey, plan B journey, proximity to friends
- Academic selection
 - Entry exams, teacher recommendation
- Fees
- Your gut feel – go and [visit!](#)
 - Be selective- parent visit then shortlist (be sure it's right for your family, you are the adult)

What are the options available?



- **State comprehensive (including faith) schools**
Siblings and Distance and Church
- **State grammar schools**
Distance and 11+ Tests
- **Independent schools**
Admissions Tests and Interview

All schools publish their admissions criteria on their website.

Non-selective State Schools (Comprehensives)



Faith schools:

- Christ's C of E (13) – in Richmond – Foundation (3.8km) or Open (1.4km)
- St Richard Reynolds RC (6) – in Twickenham – (9.5km)
- Lady Margaret's C of E (3) – in Parson's Green – Foundation (approx. 4.8km) or Open (approx. 0.4km)
- Green School for Boys C of E (3) (All offered)
- Green School for Girls C of E (1) (7.25km)

Brackets number = pupils from King's 2023-24

Community schools:

- Grey Court School (2) – in Ham (2.7km)
- Twickenham School (3) – in Whitton (no cut-off)
- Bolder Academy (2) – in Isleworth (2.6 miles)
- Waldegrave (3) – in Twickenham (Kew is in Area B: 5.5km)

Foundation = church place

[Furthest distance offers last 3 years - published table](#)

Distance

Hammersmith & Fulham - as the crow flies
Other boroughs - shortest walking distance

State grammar schools



Brackets number = pupils
from King's 2023-24

Tiffin School (1) – Priority Area is 10km

Tiffin Girls (1) – designated area: KT1, 2, 3, 4, 5, 6, 7, 8, 9, 10, 12, 13, 17, 19 TW1, 2, 3, 4, 5, 7, 8, 9, 10, 11, 12, 13, 14, 15, 16, 17 SW13, 14, 15, 17, 18, 19, 20 W3, 4, 5, 7, 13 SM4 CR4

If you're in the area:

Oct Year 6 Stage One test

Nov Year 6 Stage Two test

“For September 2025 entry onwards, Tiffin School has introduced a new Sporting Aptitude Assessment and a new Music Aptitude Assessment. Up to 10% of places will be awarded to boys who demonstrate an aptitude in Sport (5%) or Music (5%).”

Independent schools



Co-ed

Ibstock Place
Kew House
Kingston Grammar
Radnor House
Hampton Court House
St Benedict's
Latymer Upper
Epsom College

Single sex - boys

Halliford
St Paul's
Hampton
King's College School
Westminster

Single sex - girls

Lady Eleanor Holles
St Paul's Girls'
Notting Hill & Ealing
Putney High
St Catherine's
Godolphin & Latymer
Woldingham

Round One (autumn/winter Y6):
Maths, English, Verbal Reasoning and
Non-VR, computerised and written.

Round Two (Jan/Feb Y6): interviews

Affordability, bursaries and scholarships



- Bursary: means-tested fee reduction to enable a child to take up a place who otherwise wouldn't be able to
- Scholarship: award for special talent or skill, sometimes with some fee reduction attached to it or other 'perks'

Bursary places have reduced considerably recently in favour of scholarship
Scholarship - either no reduced fees or very small reduction

Preparing for exams in Year 6

- Exam boards: GL, CEM, ISEB or school's own papers?
- Computerised or written?
- Adaptive?
 - Computer-based, questions respond to whether they are answered correctly or not by getting progressively harder/easier
- Multiple-choice?
- Speak to your teacher about access arrangements - e.g. additional time
- Good resources for past paper experience available from: Bond / CGP / GL / Atom
- Interviews: how to prepare without over preparing
 - Practice but not memorise
- Tutoring...
 - Many children have a tutor to prepare

Sample timeline: state schools



From 6 June Y5: online registration for grammar school tests

June Y5: open days

1 Sept Y6: deadline for registering for grammar school tests

29 Sept Y6: Stage One (Eng & Maths) grammar school tests

17 Oct Y6: results of Stage One tests

31 Oct Y6: deadline for local authority application form

11 Nov Y6: Stage Two tests for those invited

1 March Y6: offer letters posted

15 March Y6: deadline for responding to offers

Sample timeline: independent schools



- Sept/Oct Y6: attend open days
- Oct Y6: registration deadlines (each one is different)
- Nov/Dec Y6: a few schools set exams before Christmas
- Jan Y6: most independent school exams
- Early Feb Y6: interviews for those invited
- Early March Y6: offers posted
- Mid March Y6: deadline for responding to offers

Preparing for the transition



- Open days and exam prep can help
- Y6 opportunities
- Independence: homework, bag packing, kit etc
- Practise the commute
- Playdates/transport mates
- Desk and book organisation
- Academic gaps?
- On day one...



What The King's School will do to support your family



Academic readiness

- Range of schools both state/ grammar and independent schools.
- Feedback from both state and independent shows our children are very well prepared.
- Opportunities for independence, speaking and listening skills, operating in a team, working independently, performance and sporting skills.
- Teachers know children really well.
- Daily formative and termly summative assessments enable teachers to plan specifically for their classes and individuals.
- Comprehensive transition meeting with state secondary schools - and independent schools where requested - to brief them on children (academic, extra-curricular, pastoral)

All children receive a full offer here at King's



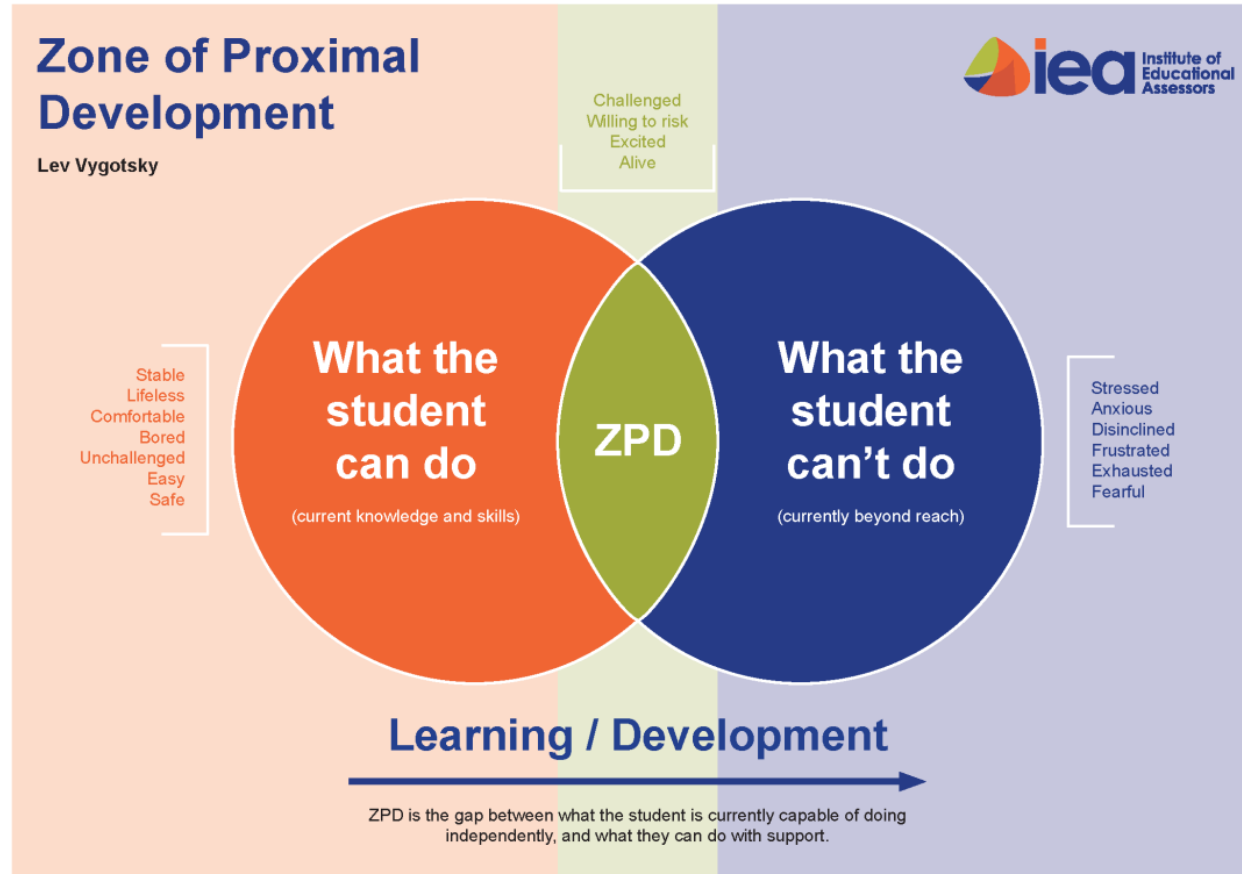
- Broad and balanced range of subjects
- Full National Curriculum
- High quality texts to underpin learning
- Education and pastoral support through Christian lens
- Broad range of state secondary, grammar and independent (lists available on our [website](#)).

Independence at King's



- School residential visits in Year 5 and Year 6
- Thames Young Mariners in Year 4
- Pupil Leadership including:
 - Faith & Prayer ambassadors, Eco Team & School Council in years 2-6
 - House and School Captains in Year 6
 - Play Leaders trained in Year 5 and 6
 - Class Ambassadors in Years 1-6
- Educational visits and visitors in all year groups in all terms
- Sporting opportunities - Borough sports, league, tournaments
- High quality music lessons, choir, orchestra, Young Voices
- Science, Maths and Writing events, challenges and competitions
- Building confidence and resilience through challenge

Zone of proximal development



Teachers provide challenge at the correct level, deepening and broadening learning rather than moving on.

Homework



- Volume and variety of homework can be challenging for pupils moving into Year 7
- Consequently, homework 'ramps up' over the course of KS2 and is compulsory in Years 5 & 6:
 - Year 5:
 - Maths: 2-3 MyMaths tasks per week
 - Reading comprehension and SPaG: 1-2 Education City activities per week
 - Spelling: 8-10 weekly spellings to learn
 - Reading for pleasure: Reading Record to be completed 5 times per week
 - Year 6:
 - Maths: 3-4 MyMaths tasks per week
 - Reading comprehension and SPaG: 2-3 Education City activities per week
 - Spelling: 10-12 weekly spellings to learn
 - Reading for pleasure: Reading Record to be completed 6 times per week
 - Science/ Topic (History & Geography): Half-termly poster/ presentation project

Speaking skills



- Precursor to writing skills - Oracy Project
- Explicitly taught vocabulary
- Drama, class discussions, debate, speaking for different audiences
- Presentation activities and homeworks
- School council, Pupil Parliament
- School performances
- Collective Worship
- Responsibilities - Pupil Leadership roles, role models in Year 6

Specific transition activities for secondary school



- Transition meeting in summer term: information sharing for continuity
- Experiences: Junior Citizenship, Met Police, Magistrates' Court and Bikeability
- Year 7s return to share experiences and answer questions
- Transition-focused PSHE lessons in summer term, with resource pack, covering: thoughts and feelings, transport, dealing with change and aspirations
- Achieving for Children and MHST transition workshop

School Events



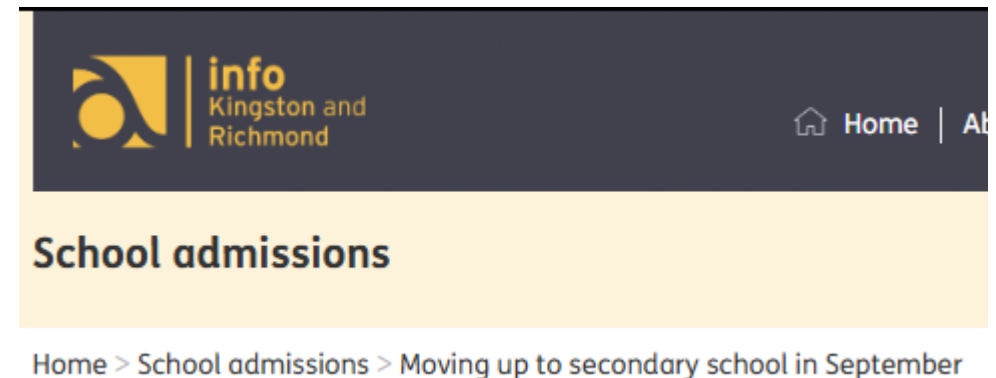
Autumn term 2024

- Meet the teacher presentations
- The King's curriculum showcase
- Parent workshops in classes
- Subject specific workshops

Completing the application form



- Complete all six preference options
- Always put your preferred school at the top even if you think you won't get it - higher priority for waiting list
- If you are offered your third choice, you will go on the waiting list for your first choice
- There is a lot of movement after offer day - some take independent school offers, move out of borough, take a waiting list place for a different school.
- There is still movement after September start as independent schools offers taken may not notify state schools that they are not taking the place



Attendance policy - visiting schools



Secondary School Open Mornings, Entrance Exams and Interviews

During the Autumn Term of an academic year, children in Years 5 and 6 have the opportunity to attend secondary school open mornings and evenings, and when applying to independent schools, can be invited to attend interviews and entrance exams.

The school is supportive of children attending events linked to choosing their secondary school, however, attending multiple open mornings, entrance exams and interviews can be very disruptive to children's learning and to their class teacher's ability to support them in the lessons they have missed when they return to school. We therefore request that parents consider carefully the number of schools they want to visit/apply for in order to minimise the disruption to their child's learning when absent from The King's.

Parents are asked to give the school at least three days' notice if their child is attending an open morning, entrance exam or interview as there are times when many children will attend the same event, causing disruption for teaching and learning on that day.

Children in Year 6 who are applying for independent schools will be allowed half-day authorised absences to attend open mornings, entrance exams and interviews for a **maximum of five different schools** during the course of an academic year. Anything beyond this will be marked as "unauthorised".

Absence from The King's prior to a child sitting an entrance exam for either a state or independent school for the purposes of revision and preparation for the exam will be marked as "unauthorised".

During the Summer Term of Year 5, children are should attend open evenings and open weekends for both state secondary schools and independent schools rather than open mornings/tours as they will have the opportunity to attend open mornings and tours for all schools when they are in Year 6. Absence from school during the Summer Term to attend open mornings/tours during the school day will not be authorised unless for exceptional circumstances (which will need to be explained to the school before attendance at the event).