



A Warm Welcome to Pupils at

The King's C of E
Primary School

The King's School encourages every child to reach their full potential, nurtured and supported in a Christian community, which lives and learns by the values of Love, Compassion and Respect.





Welcome message from the School Council

Hello and welcome to The King's School. Here we follow the values of *Love, Compassion and Respect*.

The King's community is warm and welcoming, so we are sure you will feel at home very soon. We all learn lots of new things everyday and have fun at the same time.

King's School is an amazing, supportive and fun place to be. We can't wait to meet you.

Who is who in school?



Ms Verge
Headteacher



Ms Demir
Deputy Head



Ms Sesay
Assistant Head



Ms Jones
Officer/ Welfare



Ms Morris
Office/ Welfare



Ms Burtonshaw-Grant Admin
Office/ Welfare



Mrs Noyes



Ms Watkinson

Reverend Melanie Harrington
Reverend Giles Fraser

Youth Mental Health First Aiders:

Ms Sesay
Mrs Jones
Mrs Skinner (ELSA)

Our Learning Certainties

Our learning certainties help us to us to reflective on our learning
and learn how we learn. We know good learners are:



Enthusiastic



Motivated



Resilient



Resourceful



Determined



Flexible



Imaginative



Inclusive



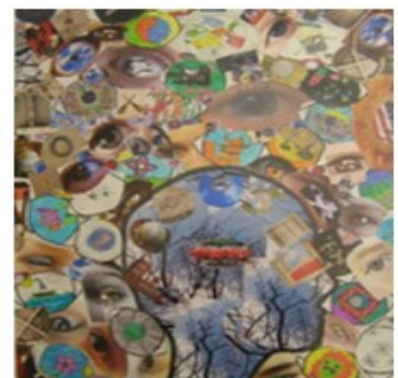
Confident



Responsive



Independent



Focused

Our School Values

Encouraging every child to reach their full potential, nurtured and supported in a Christian community which lives and learns by the values of love, compassion and respect.

John 13:34: Love one another as I have loved you

Our Christian values of Love, Compassion and Respect are at the heart of everything we do:

I can show love by:

- Being kind to others
- Thinking about other people, not just myself
- Doing something for someone else
- Being a kind friend

I can show Compassion by:

- Thinking how it might feel for someone else
- Reflecting on my words and actions
- Supporting other people when I am learning or playing

I can show respect by:

- Listening and responding politely to adults and other children
- Following the Golden rules
- Looking after my belongings, my classroom, my school and all the resources



Our Golden Rules

**Our golden rules, help us to be happy, safe
and secure at school.**

- ◇ Be gentle
- ◇ Be kind and helpful
- ◇ Work hard
- ◇ Look after property
- ◇ Listen to people
- ◇ Be honest

Our Golden Playground Rules

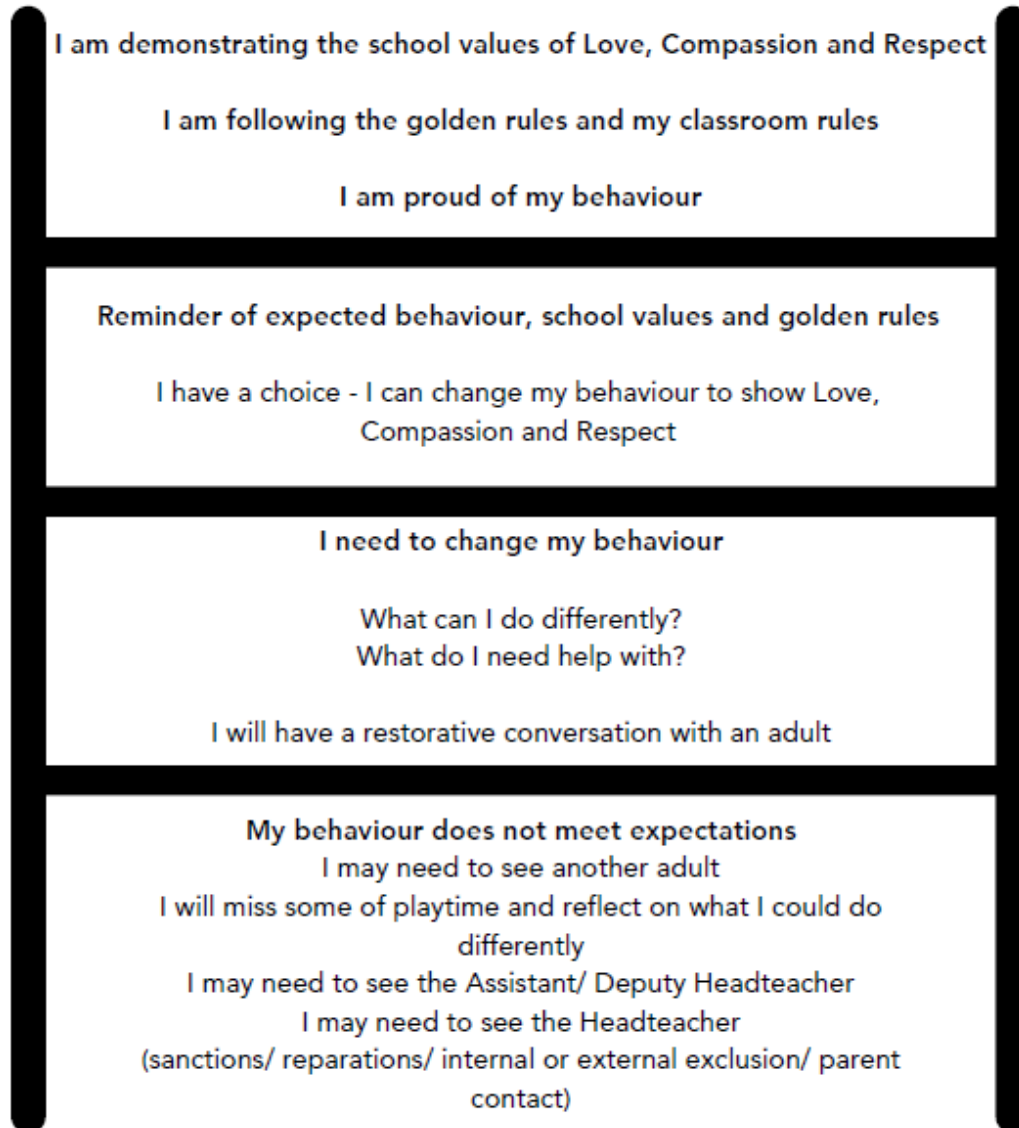
Our golden playground rules, help us to enjoy happy, safe playtimes at school

- ◇ Be gentle and play well with others
- ◇ Be kind and helpful
- ◇ Play thoughtfully and include others
- ◇ Respect our playground and equipment
- ◇ Listen to people and respect the feelings of others
- ◇ Be honest

Behaviour Ladder

We want all learners to be happy at The King's school.

The behaviour ladder is used to make sure we are demonstrating the school values, the golden rules and the classroom rules. It is a reminder of our expectations and it can help you to reflect on your behaviour.



Rewards:

We focus on the positive and celebrate all of your successes.

- Verbal descriptive praise
- Stickers (especially in KS1)
- Good Work Bag
- King's Shield badge and certificate in weekly Celebration collective worship
- DOJOs awarded for class rewards. In KS2 these also go towards the totals for House teams.

Our School Prayer

*Bless O Lord our school
Unite our hearts in love and
peace;
Help us to listen, learn and
understand,
That we may grow in Your
strength and love;
Through Jesus Christ our Lord,
Amen*



Our End of Day Prayer

*We thank you Father for today
and all the work we've done.
For help we have been given,
for our learning and our fun.*

Amen



This is always sung together at the end of the day.



Key Stage One

Lunch Prayer

This is sung before we go to lunch.

The Lord is good to me

And so I thank the Lord

For giving me the things I need,

*The sun and the rain and the apple
seed,*

The Lord is good to me.

*For every seed that grows will grow
into a tree*

*And one day soon there'll be apples
there,*

For everyone in the world to share,

The Lord is good to me.



Key Stage Two

Lunch Prayer

This is sung in two groups (with an echo) before

Thank you Father
Thank you Father
For our food
For our food
Bless it for us
Bless it for us
Amen, Amen



Timetables

EYFS

Time	Activity
08.40	Children enter class
08.50	Register/ Morning activity
09.00	EYFS Input/ busy learning
10.15-10.30	Collective Worship (N.B. Tuesdays and Wednesday Collective Worship is 09.00-09.25)
10.45-11.50	Busy learning
11.50-13.00	Lunchtime
13.00-15.20	Busy learning
15.20	End of school day

KS1

Time	Activity
08.40	Children enter class
08.50	Register/ Guided reading
09.15	Lessons start
10.15-10.30	Collective Worship (N.B. Tuesdays and Wednesday Collective Worship is 09.00-09.25)
10.30-10.45	Break time
10.45-12.00	Lessons
12.00-13.00	Lunchtime
13.00-15.20	Lessons
15.20	End of school day

KS2

Time	Activity
08.40	Children enter class
08.50	Register/ Guided reading
09.00—09.25	Collective Worship
09.25-10.45	Lessons
10.45-11.00	Break time
11.00-12.25	Lessons
12.25-13.25	Lunchtime
13.25-15.25	Lessons
15.25	End of school day

N.B. At lunchtime, you have a choice of school lunches or a packed lunch

Lessons

These are the lessons that take part in KS1 and KS2. Please look at the school website for more information and to know the topics covered in your year group.

www.kings.richmond.sch.uk

Go to: Learning—Curriculum Overview

Learning— Year Group Pages

- English: Writing
- English: Reading
- Phonics and spelling
- Mathematics
- Religious Education
- Science
- Art & Design and Design & Technology
- Computing
- History
- Foreign Languages
- Geography
- Music
- Physical Education (PE)
- PSHE

Settling In

To help you settle in to school you will have a:

- Tour of the school
- Buddy for the classroom and playground
- Meeting with your class teacher before your first day
- All About Me booklet to complete

Around Our School

Here are some key places around our school.

The Library



The 3G



Our Building



Our Playground Spaces



Grow Zone



Early Years Area



Reflection Zone



School Events

These photos show some of the many events that happen at The King's School during the year.



Orchestra



Collective worships



Performances



World Book Day



Sporting Events

Notes

My teacher is:

My first buddy is:

Our PE days are:

My homework is set on:



Finally, we hope that you enjoy your time at King's as we welcome you into our school community.